

Table 3.1. The best chromatographic conditions for simultaneous measurement of amlodipine, atorvastatin and glimepiride.

Column	BDS Hypersil C18 (PART NO 28205-254630) BIM. (mm) 250*4.6 particle Sz (u) 5
Solvent system (mobile phase)	950 D.W , 600 ml ACN , 600 ml Methanol, adjusted at 8 PH
Detection	UV detector 237 nm
Injection volume	10 $\mu$ l
Flow rate	1.5 ml\min
Oven Temperature	25 $^{\circ}$ c
Retention times*	
Amlodipine	6.2-7.8 min
Glimepiride	8.0-8.9 min
Atorvastatin	10.4-11.2 min

### 3.3. Identification

The purpose of identification is to find out the result of each drug under the chromatographic conditions that mentioned before.

#### 3.3.1. Amlodipine

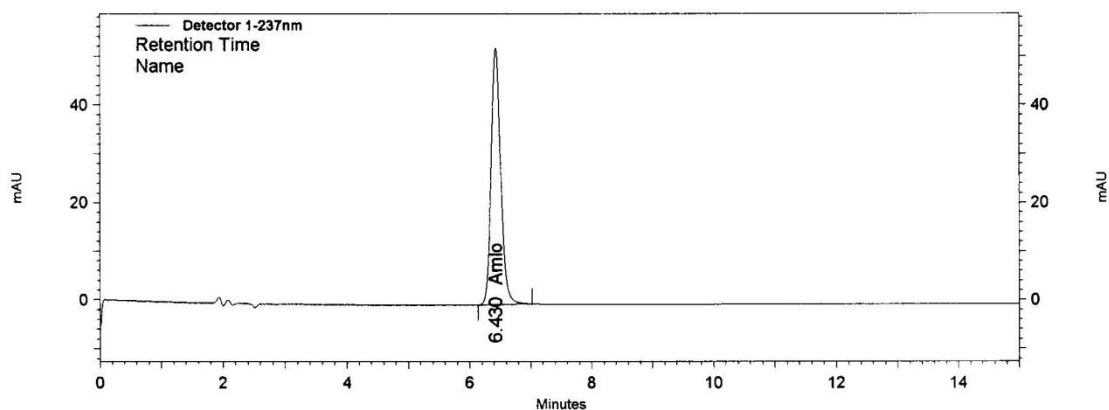


Figure 3.2: The chromatogram of a sample containing amlodipine under the chromatographic conditions.